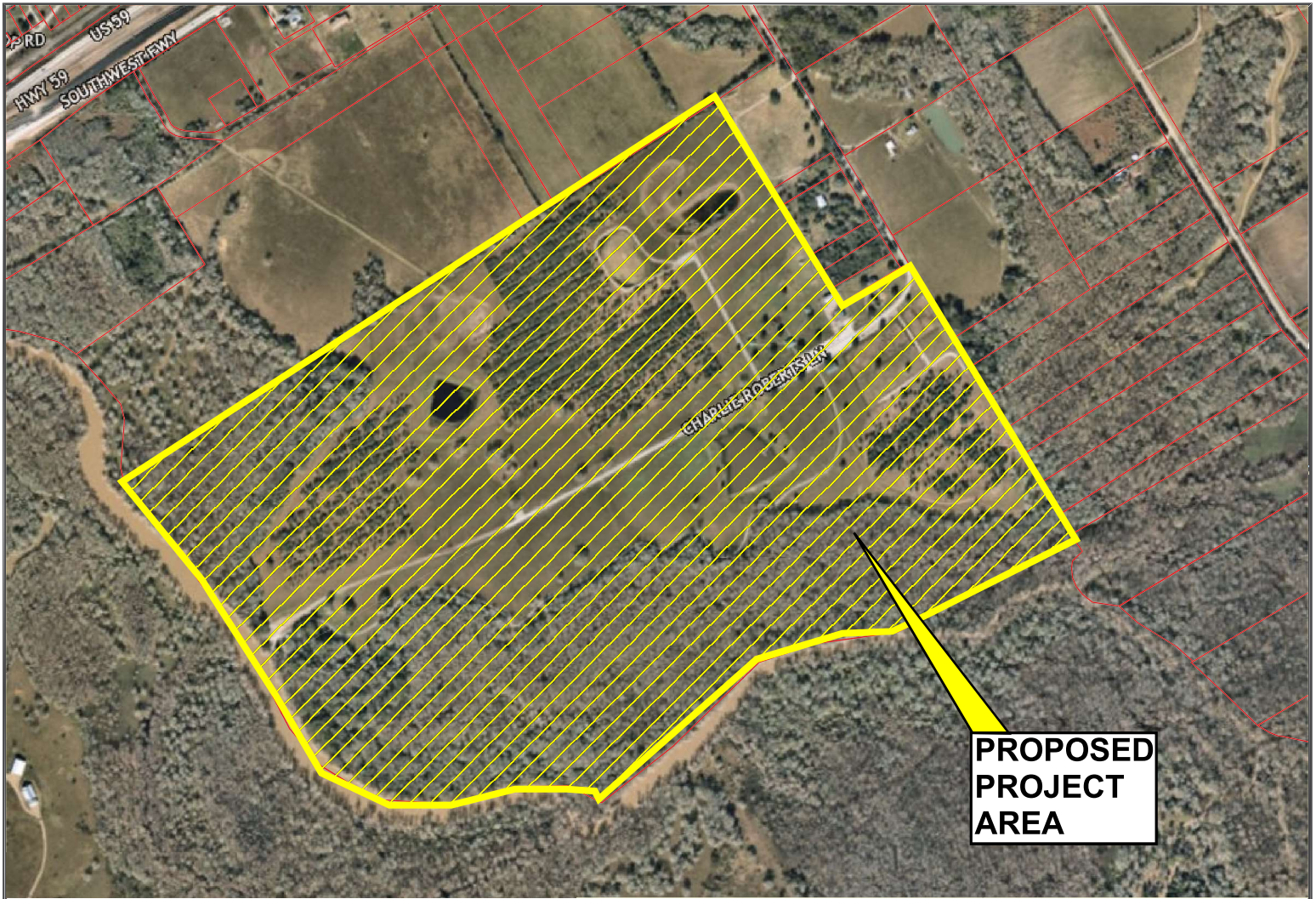


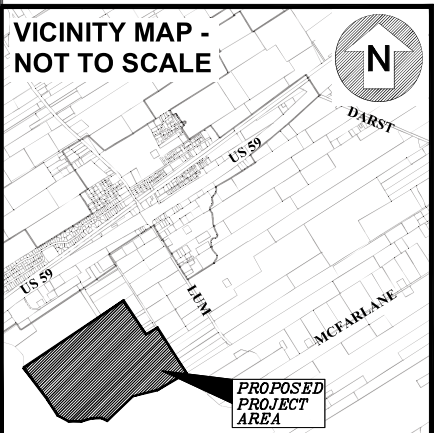
PROPOSED 2023 PARKS BOND ELECTION PROJECTS				
Precinct	Park Name	Description of Project	Location Area	Estimated Cost
4	Bates M. Allen Park	Construct a new 2 story Learning Center building (8,000 SF). Also, a new expanded road entrance, new parking lot, lighting for parking area, elevated monument sign, new maintenance facility, irrigation, landscaping, area water wells and septic systems, boat ramp, pier, grading and detention pond.	Kendleton	\$7,315,250.00
4	Cole Theatre	Assessment study, waterproof and decontaminate building. Also, provide preliminary design/schematic.	Rosenberg	\$1,015,000.00
4	TW Davis YMCA (Contribution)	Contribution of \$2,500,000 towards grant funding.	Richmond	\$2,500,000.00
4	Trails Improvements	Construct (4,000LF) of concrete trails (10 FT) wide (West Airport to West Belfort on Red Gully and Cullinan Park to Old Richmond on Red Gully)	Sugar Land	\$3,262,500.00
4	Community Gardens	Construct raised community garden beds at Mission Bend Library, Four Corners, TW Davis YMCA. These sites will have raised beds and irrigation.	Precinct 4	\$242,875.00
4	Mission Bend Senior Center	Construct indoor Natatorium, (14,000 SF) community center, kitchen, trees monument sign, signage, site water/sewer, electrical, drainage, landscaping, detention pond, irrigation, sidewalks and lighted parking area.	Mission Bend	\$11,288,250.00
4	Splash Pads	Repair Four Corners Splash Pad and construct a new Splash Pad in North Richmond. Also, construct site water/sewer, grading, electrical, monument sign, signage, sidewalks, drainage, parking lot, lighting and detention pond.	Precinct 4	\$1,986,500.00
4	Fair Office - Entrance - Parking - Arena	Remove and reconstruct Fair Office building, landscaping, irrigation. Reconstruct Midway parking lot and drainage. Remove and replace entrance gate at Midway. Improve Fair Administration office at Midway. Also, replace roof on Arena and repair flooring and foundations in Buildings C, CR and D.	Rosenberg	\$8,685,500.00
4	Murals and Sculptures	\$500,000 towards murals and sculptures at various population centers in Pct. 4	Precinct 4	\$500,000.00
4	City of Beasley Park	\$150,000 to the City for park near fire station.	Beasley	\$150,000.00
4	King-Kennedy Park	Replace playground unit.	Kendleton	\$199,000.00
			PRECINCT 4 TOTAL	\$37,144,875.00



**PROPOSED
PROJECT
AREA**



NOT TO SCALE



VICINITY MAP - NOT TO SCALE

Bates M. Allen Park - Precinct 4
 Construct a new 2 story Learning Center building (8,000 SF). Also, a new expanded road entrance, new paking lot, lighting for parking area, elevated monument sign, new maintenance facility, irrigation, landscaping, area water wells and septic systems, boat ramp, pier, grading and detention pond.

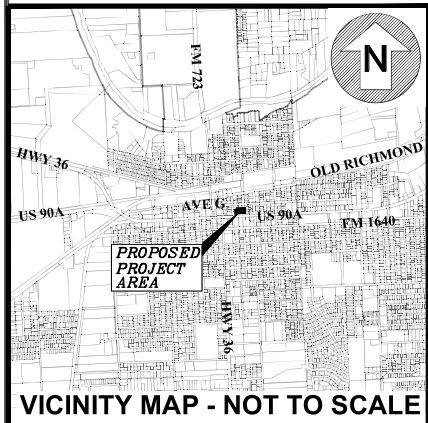
Estimated Cost: \$7,315,250

PREPARED BY:
KALUZA
 INC

CONSULTING ENGINEERS & SURVEYORS

ENGINEERING FIRM No. F-1339
 SURVEYING FIRM No. 10010000
 3014 AVENUE I, ROSENBERG, TX. 77471
 PH.281.341.0808 FAX.281.341.6333

JULY, 2023



Cole Theatre - Precinct 4

Assessment study, waterproof and decontaminate building. Also, provide preliminary design/schematic.

Estimated Cost: \$1,015,000

PREPARED BY:
KALUZA
 INC
 CONSULTING ENGINEERS & SURVEYORS

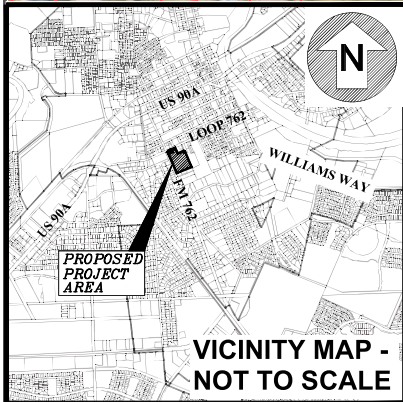
ENGINEERING FIRM No. F-1339
 SURVEYING FIRM No. 10010000
 3014 AVENUE I, ROSENBERG, TX. 77471
 PH.281.341.0808 FAX.281.341.6333

JULY, 2023

VICINITY MAP - NOT TO SCALE



**PROPOSED
PROJECT
AREA**



**VICINITY MAP -
NOT TO SCALE**

TW Davis YMCA - Precinct 4

**Contribution of \$2,500,000 towards grant
funding.**

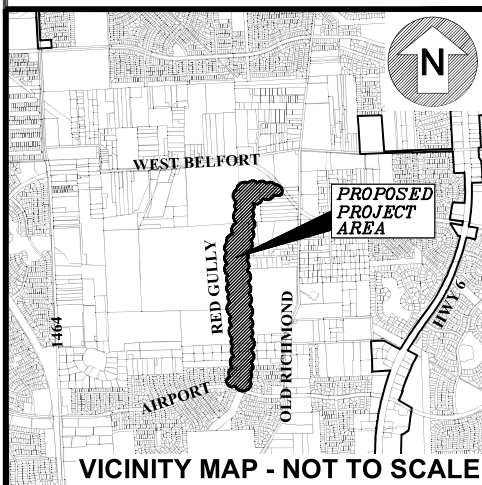
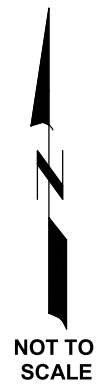
Estimated Cost: \$2,500,000

PREPARED BY:
KALUZA
INC

CONSULTING ENGINEERS & SURVEYORS

ENGINEERING FIRM No. F-1339
SURVEYING FIRM No. 10010000
3014 AVENUE I, ROSENBERG, TX. 77471
PH.281.341.0808 FAX.281.341.6333

JULY, 2023



Trails Improvements - Precinct 4
 Construct (4,000LF) of concrete trails (10 FT) wide (West Airport to West Bellfort on Red Gully and Cullinan Park to Old Richmond on Red Gully)

Estimated Cost: \$3,262,500

PREPARED BY:
KALUZA
 INC

CONSULTING ENGINEERS & SURVEYORS

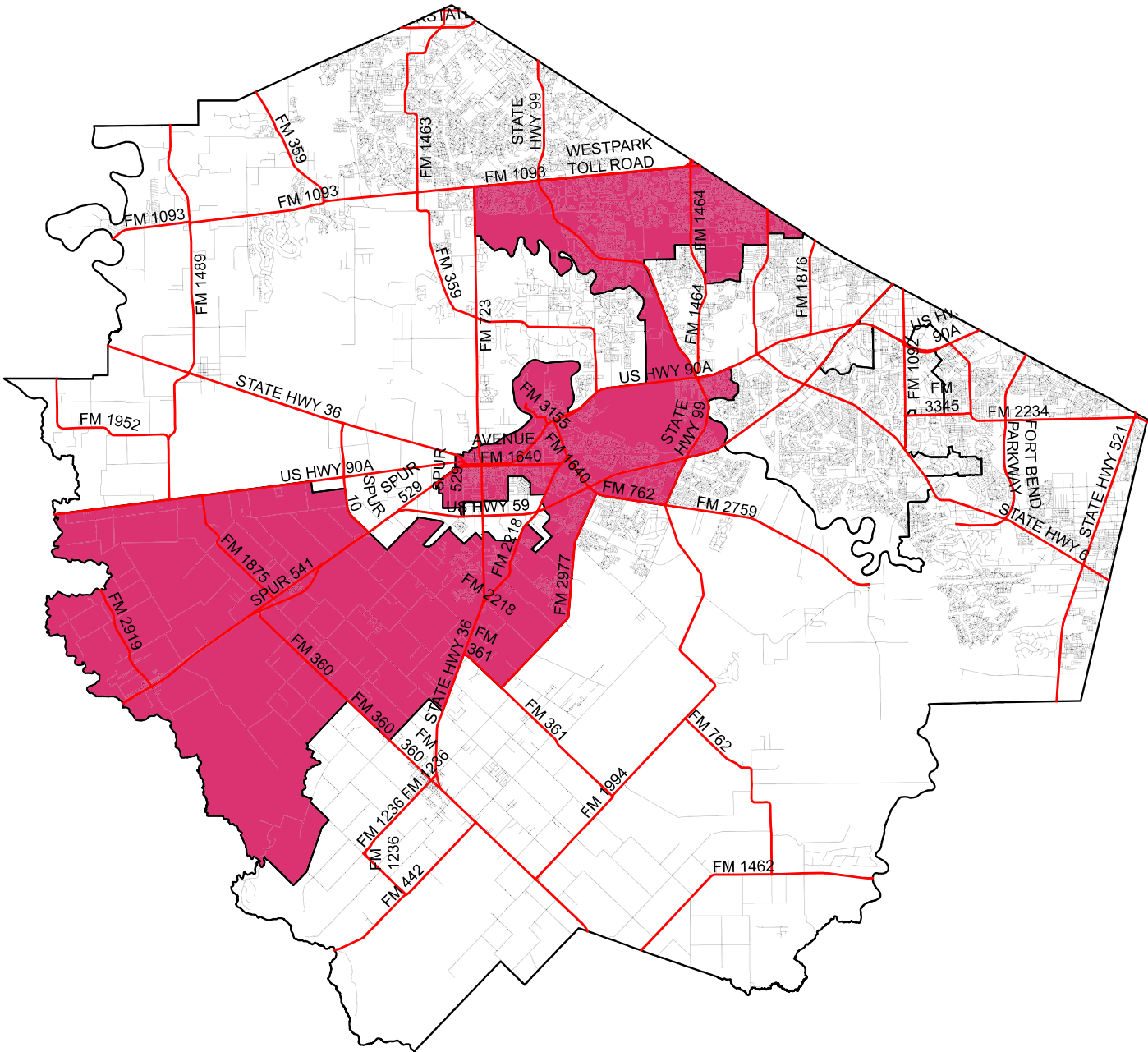
ENGINEERING FIRM No. F-1339
 SURVEYING FIRM No. 10010000
 3014 AVENUE I, ROSENBERG, TX. 77471
 PH.281.341.0808 FAX.281.341.6333

JULY, 2023

Fort Bend County Precinct 4



NOT TO SCALE



Community Gardens - Precinct 4

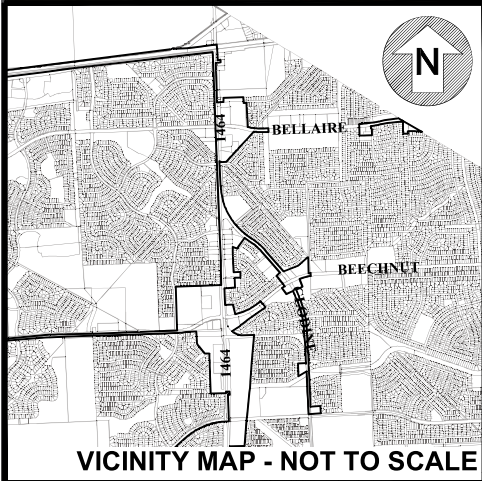
Construct raised community garden beds at Mission Bend Library, Four Corners, TW Davis YMCA. These sites will have raised beds and irrigation.

Estimated Cost: \$242,875

PREPARED BY:
KALUZA
INC
CONSULTING ENGINEERS & SURVEYORS

ENGINEERING FIRM No. F-1339
SURVEYING FIRM No. 10010000
3014 AVENUE I, ROSENBERG, TX. 77471
PH.281.341.0808 FAX.281.341.6333

JULY, 2023



**Area for Mission Bend Senior Center -
Precinct 4**

**Construct indoor natatorium (14,000 SF)
community center, kitchen, trees,
monument sign, signage, site
water/sewer, electrical, drainage,
landscaping, detention pond, irrigation,
sidewalks and lighted parking area.**

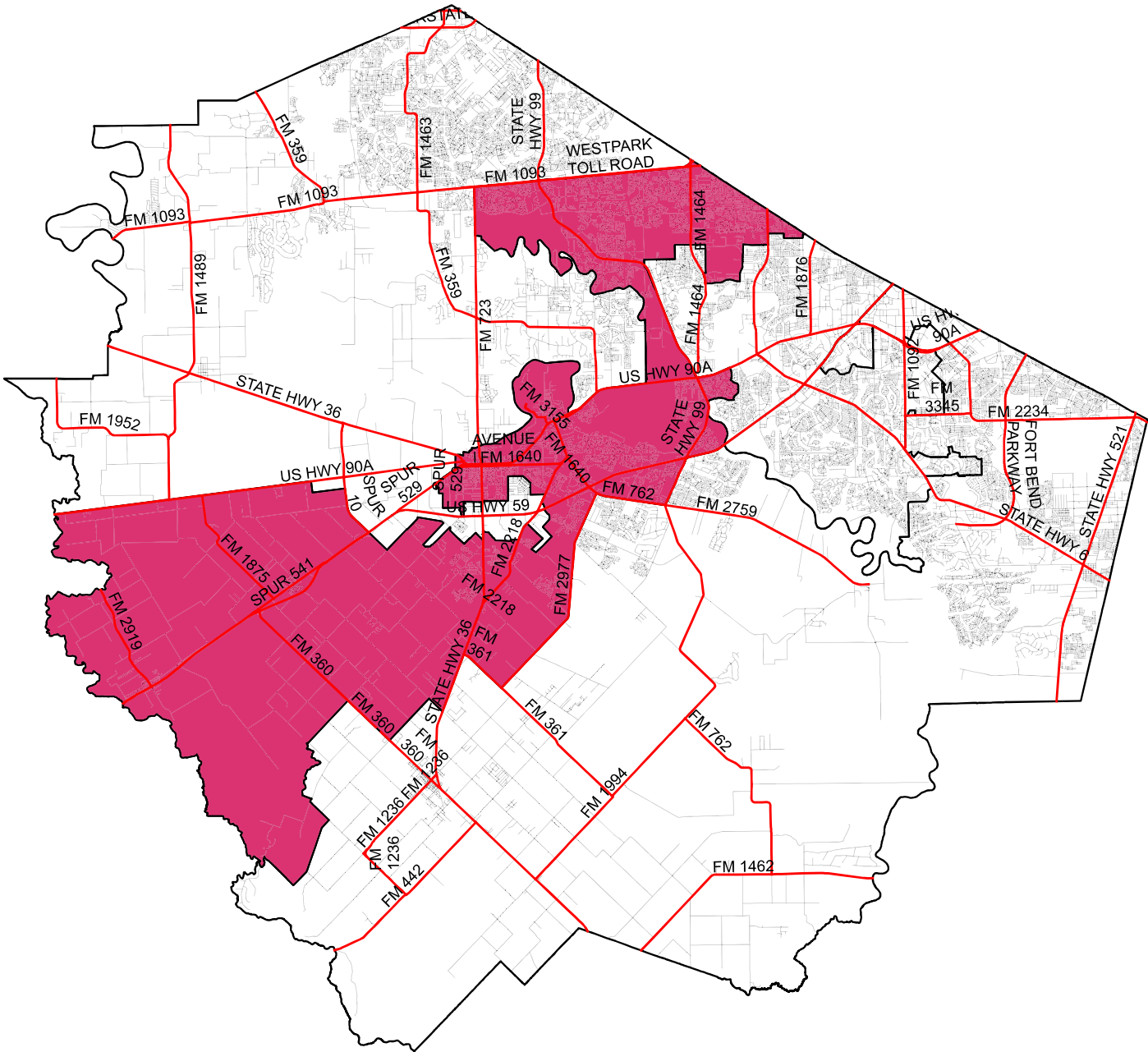
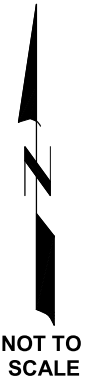
Estimated Cost: \$11,288,250

PREPARED BY:
KALUZA
INC

CONSULTING ENGINEERS & SURVEYORS
ENGINEERING FIRM No. F-1339
SURVEYING FIRM No. 10010000
3014 AVENUE 1, ROSENBERG, TX. 77471
PH.281.341.0808 FAX.281.341.6333

JULY, 2023

Fort Bend County Precinct 4



Splash Pads - Precinct 4

Repairing Four Corners Splash Pad and constructing new Splash Pads. Also, construct site water/sewer, grading, electrical, monument signs, signage, sidewalks, drainage, parking lots, lighting, and detention ponds.

Estimated Cost: \$1,986,500

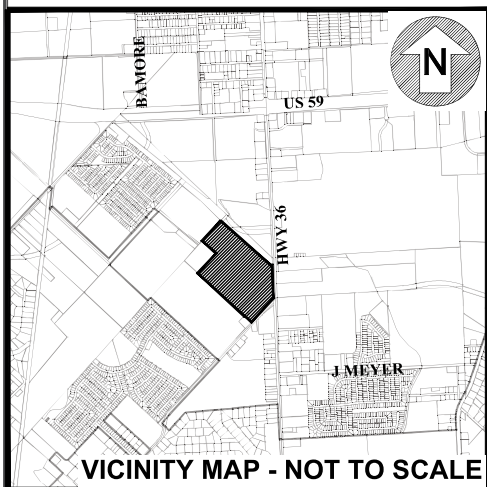
PREPARED BY:
KALUZA
INC
CONSULTING ENGINEERS & SURVEYORS

ENGINEERING FIRM No. F-1339
SURVEYING FIRM No. 10010000
3014 AVENUE I, ROSENBERG, TX. 77471
PH.281.341.0808 FAX.281.341.6333

JULY, 2023



**PROPOSED
PROJECT
AREA**

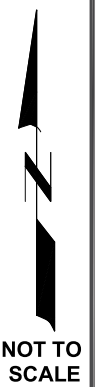


VICINITY MAP - NOT TO SCALE

Fair Offices - Entrance - Parking - Precinct 4

Remove and reconstruct Fair Office building, landscaping, irrigation. Reconstruct Midway parking lot and drainage. Remove and replace entrance gate at Midway. Improve Fair Administration office at Midway. Also, replace roof on Arena and repair flooring and foundations in Buildings C, CR and D.

Estimated Cost: \$8,685,500



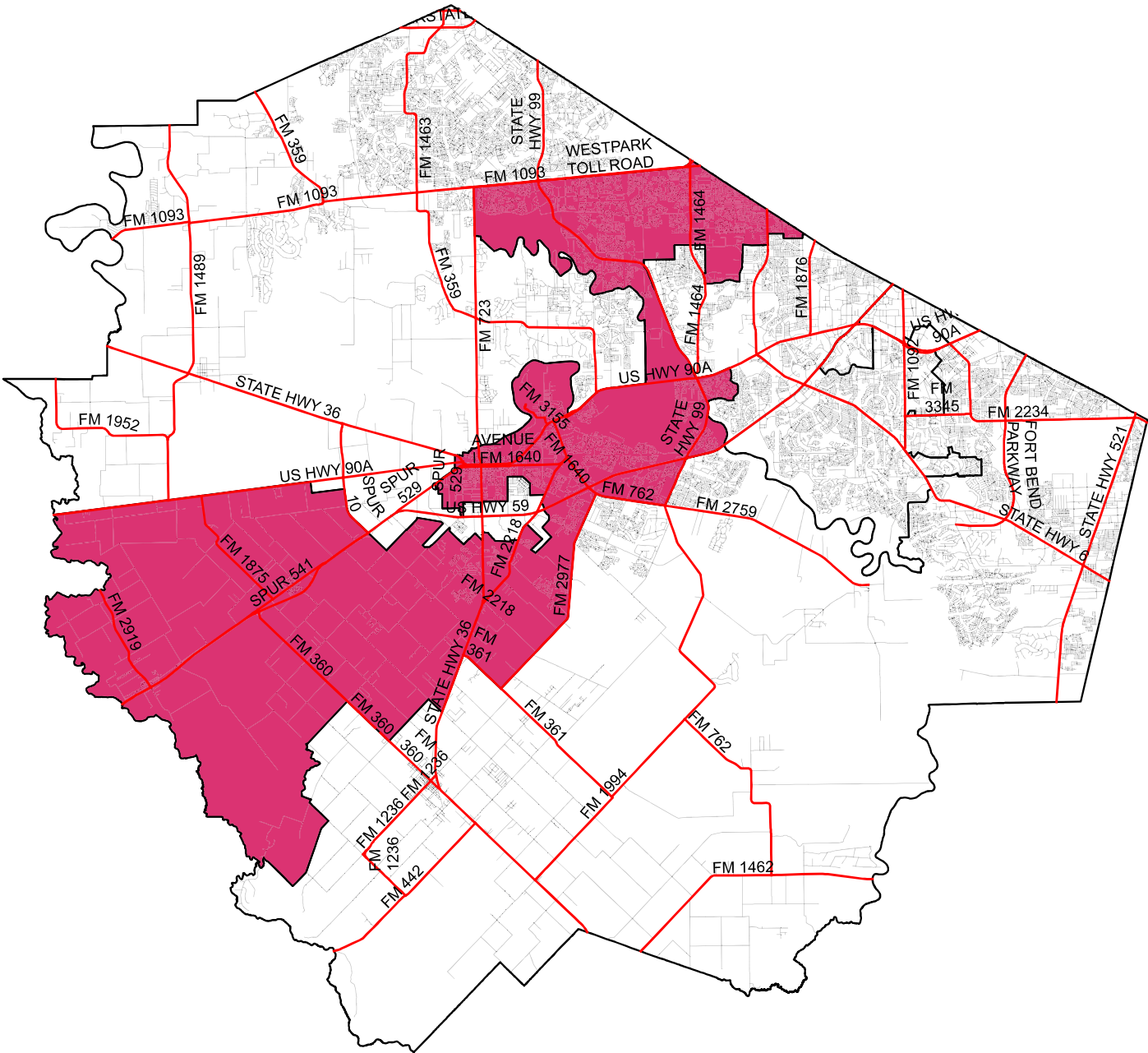
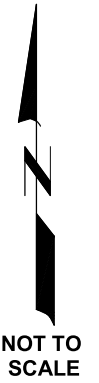
PREPARED BY:
KALUZA
INC

CONSULTING ENGINEERS & SURVEYORS

ENGINEERING FIRM No. F-1339
SURVEYING FIRM No. 10010000
3014 AVENUE I, ROSENBERG, TX. 77471
PH.281.341.0808 FAX.281.341.6333

JULY, 2023

Fort Bend County Precinct 4



Murals and Sculptures (Contribution) - Precinct 4

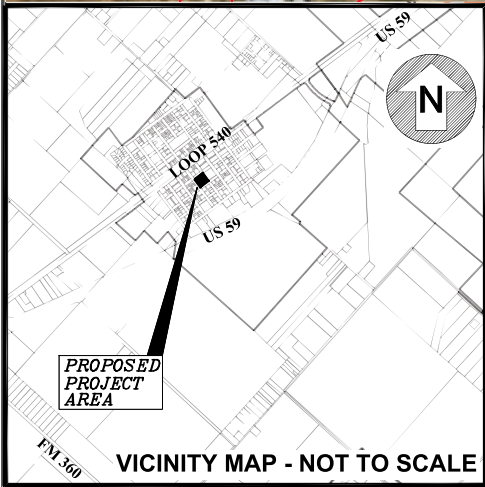
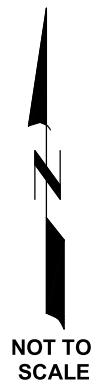
\$500,000 towards murals and sculptures at various population centers in Pct. 4.

Estimated Cost: \$500,000

PREPARED BY:
KALUZA
INC
CONSULTING ENGINEERS & SURVEYORS

ENGINEERING FIRM No. F-1339
SURVEYING FIRM No. 10010000
3014 AVENUE I, ROSENBERG, TX. 77471
PH.281.341.0808 FAX.281.341.6333

JULY, 2023



City of Beasley Park (Contribution) - Precinct 4

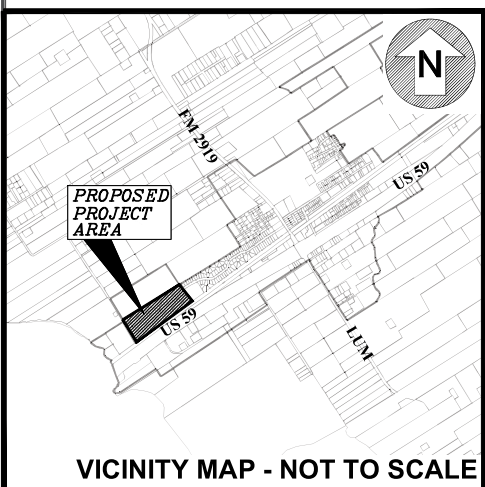
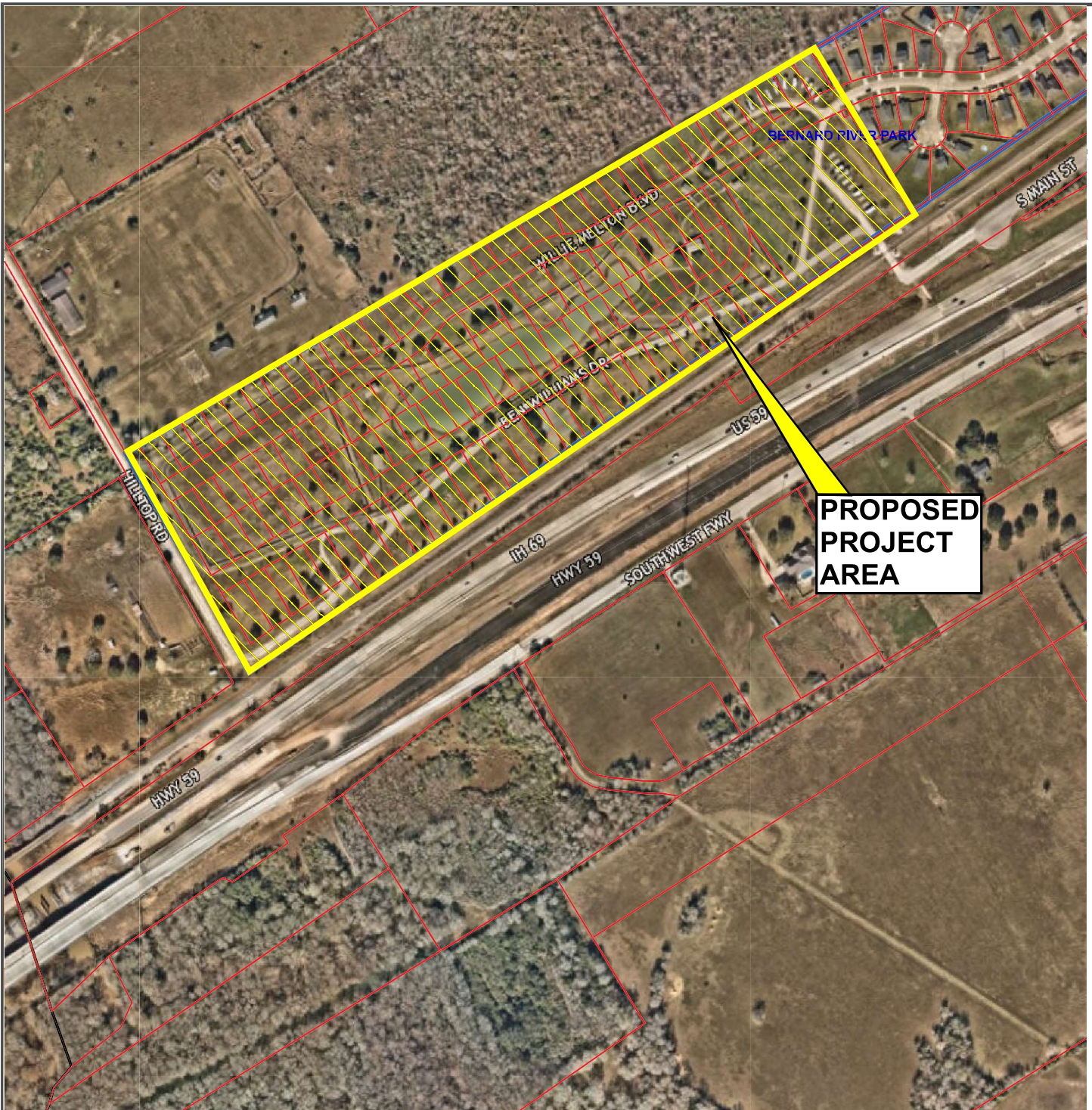
\$150,000 to the City for park near fire station.

Estimated Cost: \$150,000

PREPARED BY:
KALUZA
 INC
 CONSULTING ENGINEERS & SURVEYORS

ENGINEERING FIRM No. F-1339
 SURVEYING FIRM No. 10010000
 3014 AVENUE I, ROSENBERG, TX. 77471
 PH.281.341.0808 FAX.281.341.6333

JULY, 2023



King-Kennedy Park - Precinct 4

Replace playground unit.

Estimated Cost: \$199,000

PREPARED BY:
KALUZA
 INC
 CONSULTING ENGINEERS & SURVEYORS

ENGINEERING FIRM No. F-1339
 SURVEYING FIRM No. 10010000
 3014 AVENUE I, ROSENBERG, TX. 77471
 PH.281.341.0808 FAX.281.341.6333

JULY, 2023

VICINITY MAP - NOT TO SCALE